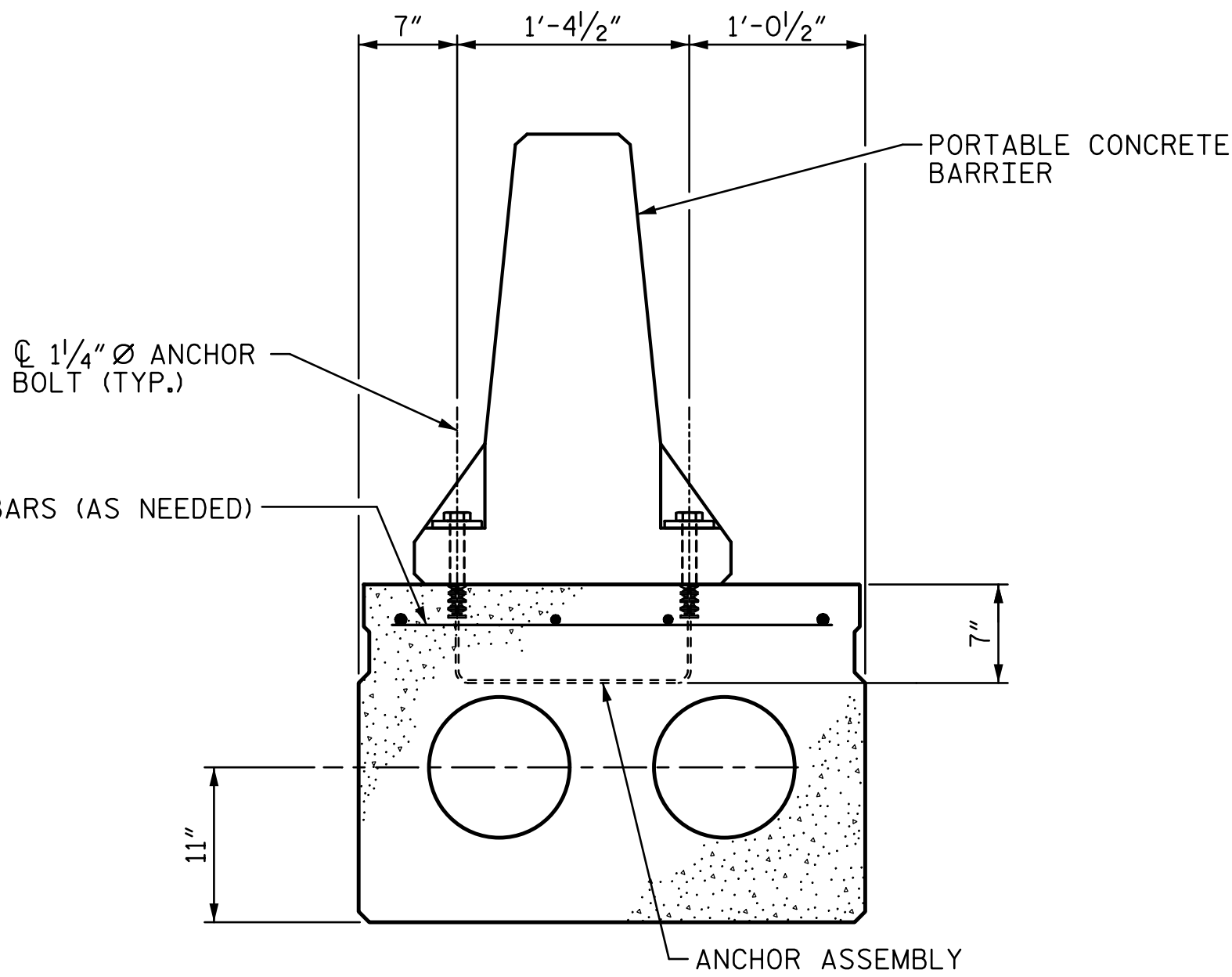
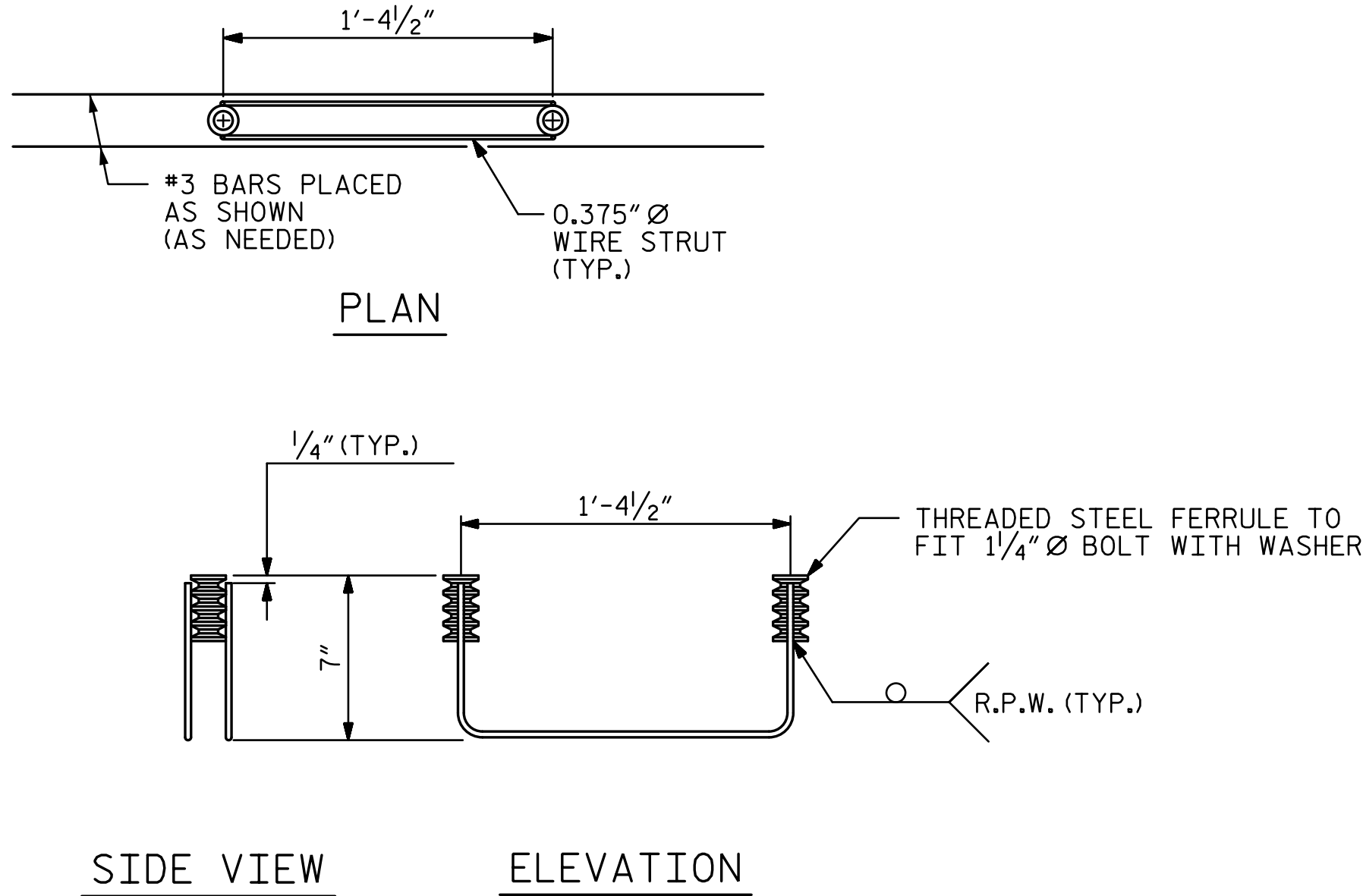


R:\Structures\ustation\401.015.17BP.14.R.158\_SML\_PCCS03\_008.550009.dgn 10/31/2025 5:01:43 PM Jones

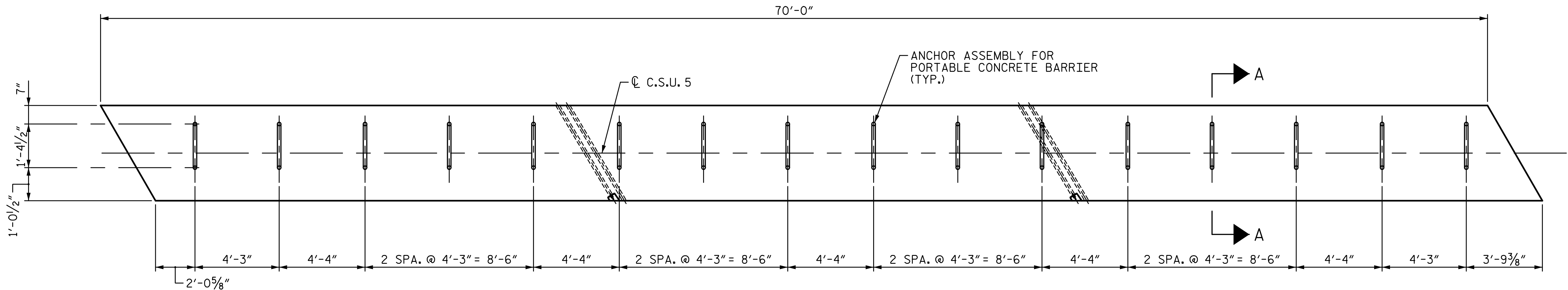


NOTE: THE #3 BARS ARE INCIDENTAL AND THEIR COST SHALL BE INCLUDED IN THE PRICE BID FOR THE PRESTRESSED CONCRETE CORED SLAB.



## ANCHOR ASSEMBLY FOR PORTABLE CONCRETE BARRIER

(16 ASSEMBLIES REQUIRED IN CORED SLAB UNIT 5,  
6 ASSEMBLIES REQUIRED IN APPROACH SLABS)



## PLAN OF CORED SLAB UNIT #5

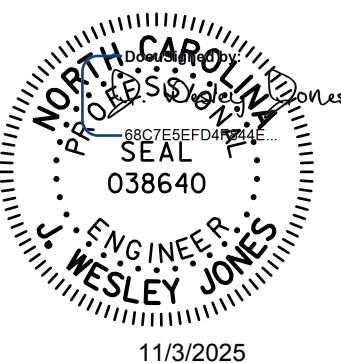
(SHOWING LOCATION OF ANCHOR ASSEMBLIES)  
(FOR ANCHOR ASSEMBLY SPACING ON APPROACH SLABS, SEE "BRIDGE  
APPROACH SLAB FOR PRESTRESSED CONCRETE CORED SLAB UNIT")

PROJECT NO. B-6029

MACON COUNTY

STATION: 17+07.50 -L-

SHEET 3 OF 4



STV Engineers, Inc.  
2151 Hawkins Street, Suite 1400  
Charlotte, NC 28203  
NC License Number F-0991

DOCUMENT NOT CONSIDERED  
FINAL UNLESS ALL  
SIGNATURES COMPLETED

STATE OF NORTH CAROLINA  
DEPARTMENT OF TRANSPORTATION  
RALEIGH

3'-0" X 2'-0"  
PRESTRESSED CONCRETE  
CORED SLAB UNIT  
60° SKEW

DRAWN BY : LEM DATE : 7-17  
CHECKED BY : JTG DATE : 11-17  
DESIGN ENGINEER OF RECORD : JWJ DATE : 10-25

REVISIONS				SHEET NO.	
NO.	BY:	DATE:	NO.	BY:	DATE:
1			3		
2			4		
				S-8	
				TOTAL SHEETS	17